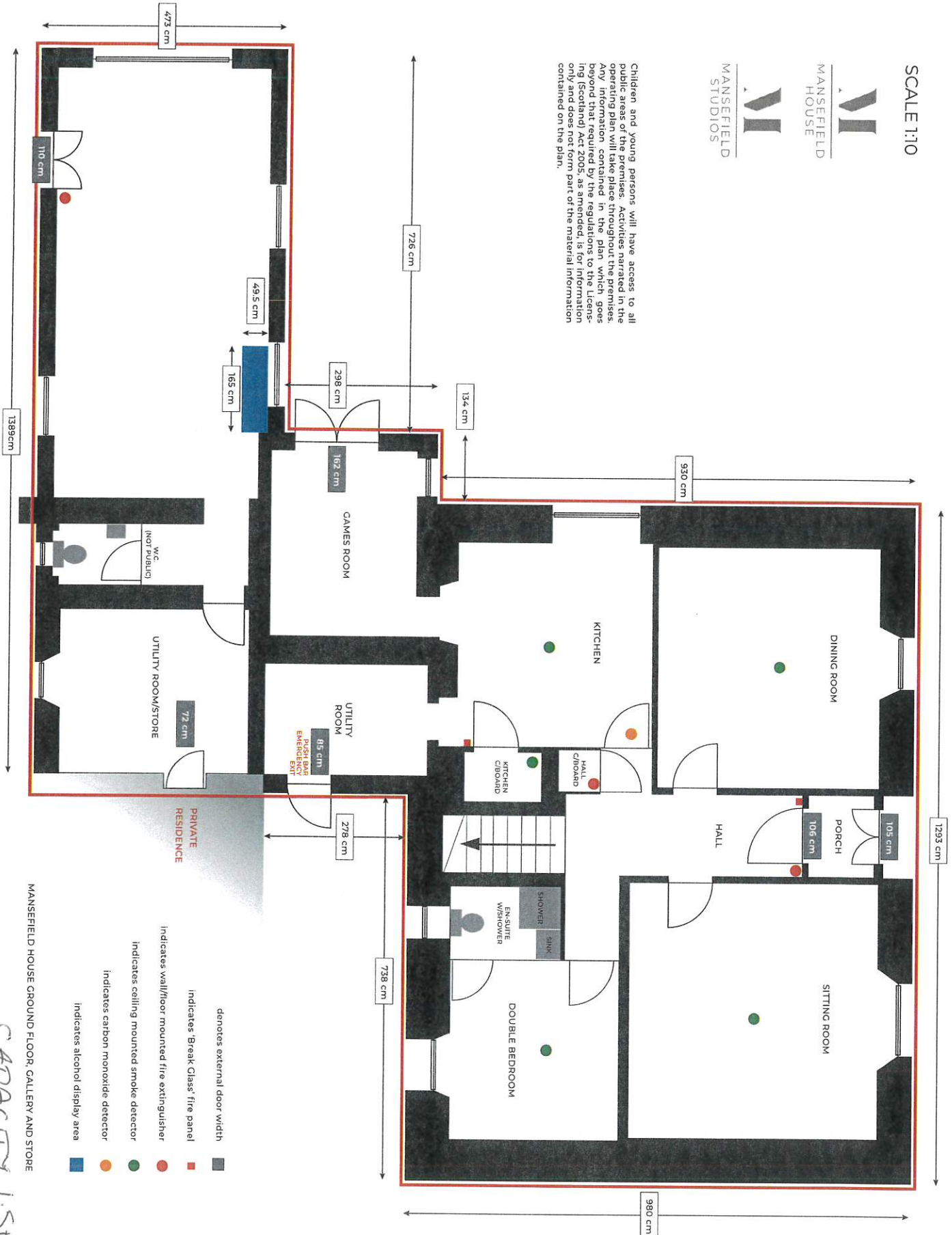


SCALE 1:10



Children and young persons will have access to all public areas of the premises. Activities narrated in the operating plan will take place throughout the premises. Any information contained in the plan which goes beyond that required by the regulations to the Licensing (General) Act 2005, as amended, is for information only and does not form part of the material information contained on the plan.



- denotes external door width
- indicates Break Class fire panel
- indicates wall/floor mounted fire extinguisher
- indicates ceiling mounted smoke detector
- indicates carbon monoxide detector
- indicates alcohol display area

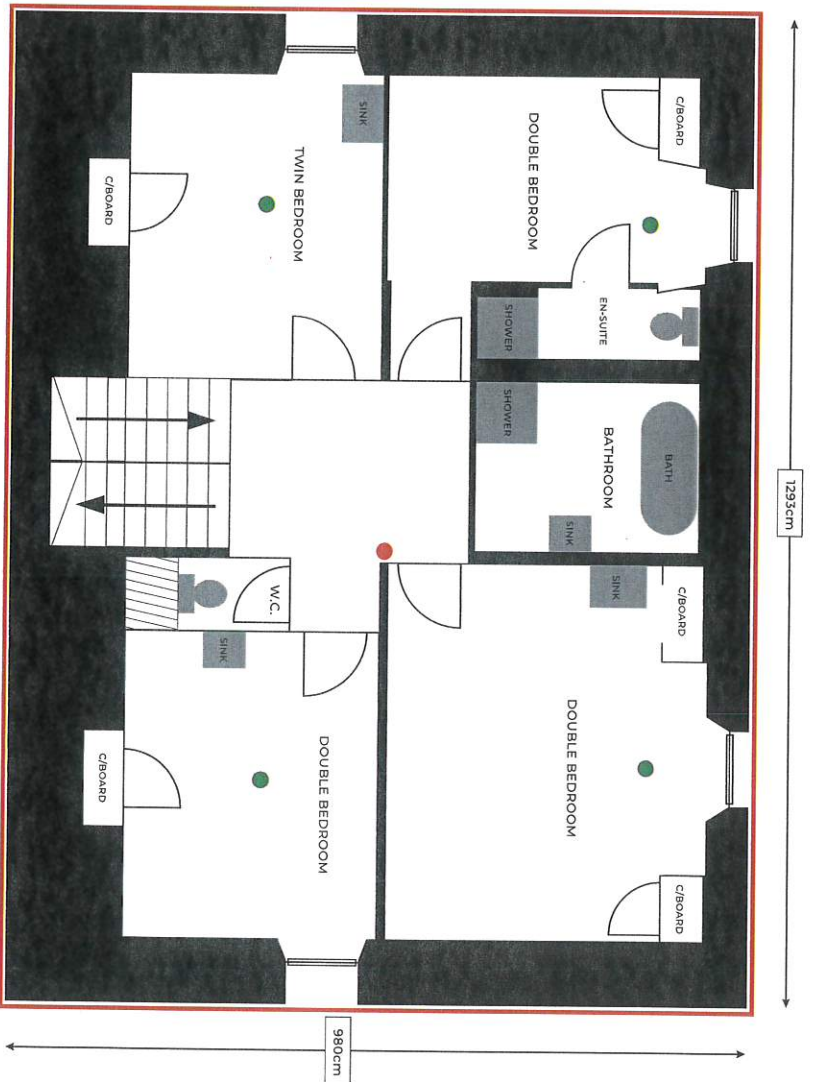
MANSEFIELD HOUSE GROUND FLOOR, GALLERY AND STORE

CAPACITY 1.5H x 1.65W  
TOTAL 7.475W50

SCALE 1:10



Children, and young persons will have access to all public areas of the premises. Activities planned in the operating plan will take place throughout the premises. Any information contained in the plan which goes beyond that required by the regulations to the Licensing (Scotland) Act 2005, as amended, is for information only and does not form part of the material information contained on the plan.



- Indicates 'Break Class' fire panel
- Indicates wall/floor mounted fire extinguisher
- Indicates ceiling mounted smoke detector
- Indicates carbon monoxide detector